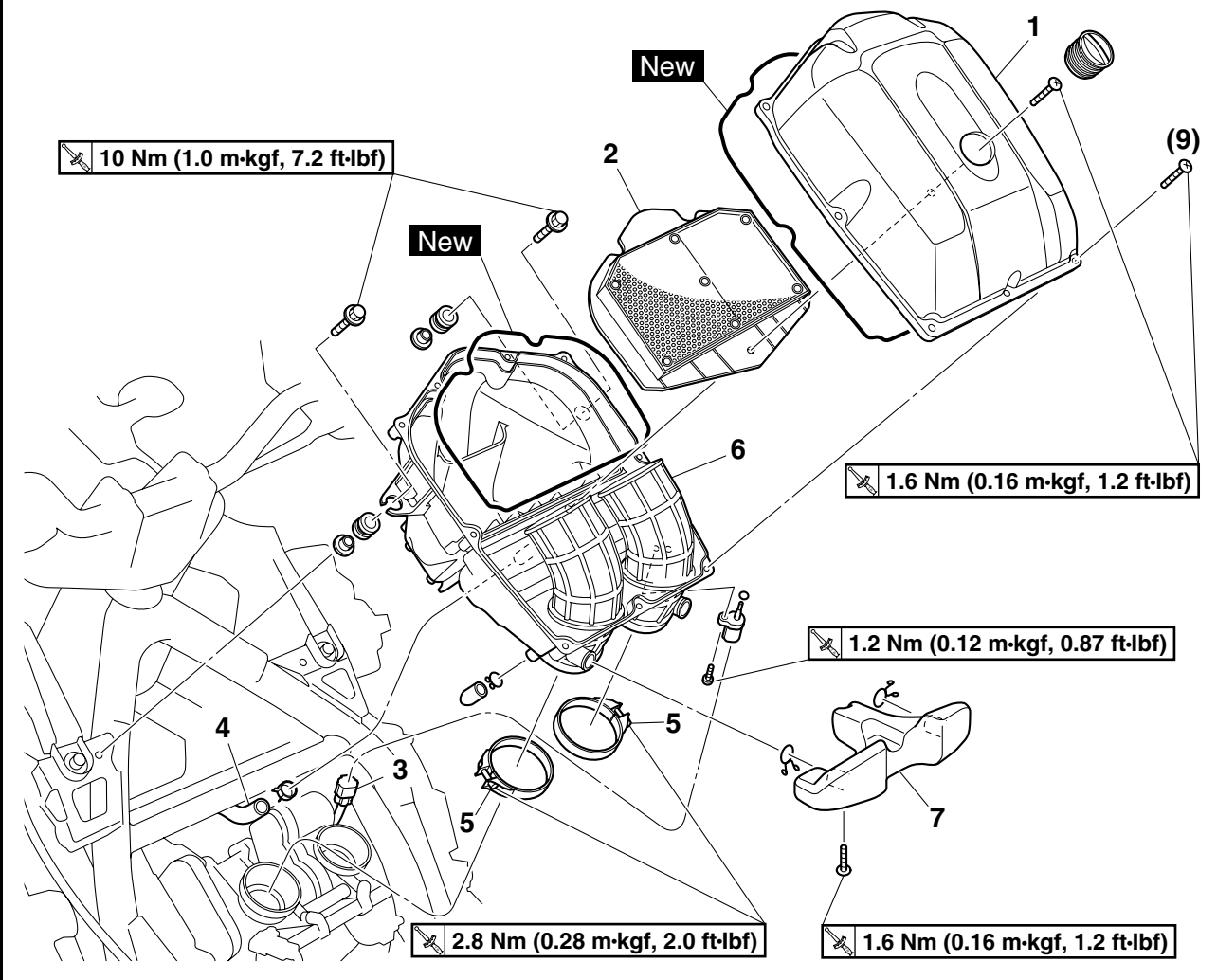


Removing the air filter case



Order	Job/Parts to remove	Q'ty	Remarks
	Rider seat		Refer to "Removing the seats and carriers".
	Left side cowling/Right side panel		Refer to "Removing the side cowlings, side panel, and engine guard".
1	Air filter case cover	1	
2	Air filter element	1	
3	Intake air temperature sensor coupler	1	Disconnect.
4	Cylinder head breather hose	1	Disconnect.
5	Air filter case joint clamp screw	2	Loosen.
6	Air filter case	1	
7	Air chamber	1	
			For installation, reverse the removal procedure.

EAS23P1013

REMOVING THE AIR FILTER CASE

1. Remove:

- Fuel tank bolts “1”
- Air filter case

TIP

After removing the fuel tank bolts, lift up the front of the fuel tank.

ECA23P1003

NOTICE

When lifting up the fuel tank, be careful not to pull the fuel tank overflow hose and fuel tank breather hose.

