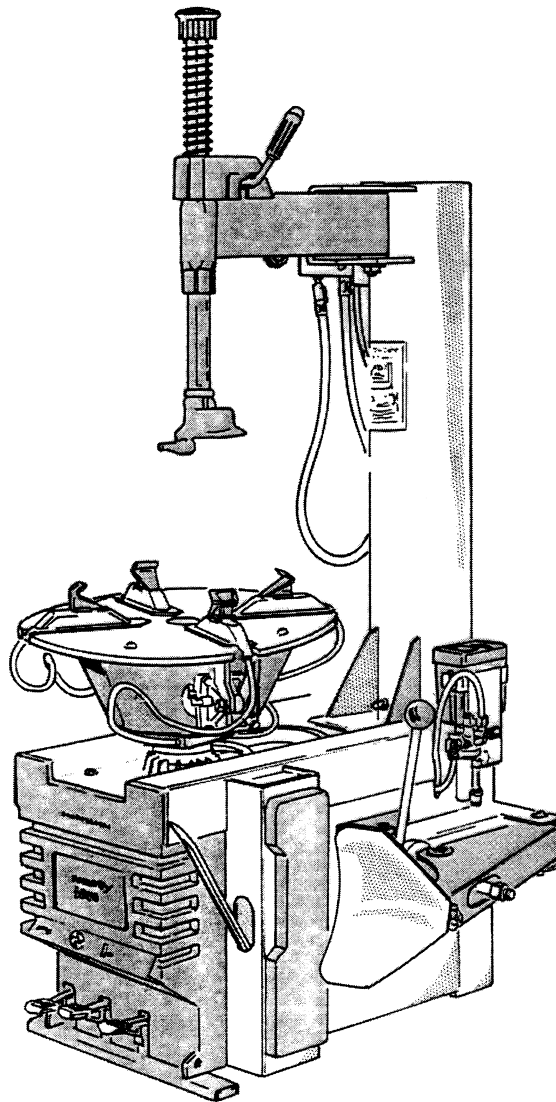


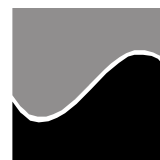
monty 1510

Spare Parts list

Tire Changer



HOFMANN®



Date 05/07/15

Figure 1 Chassis

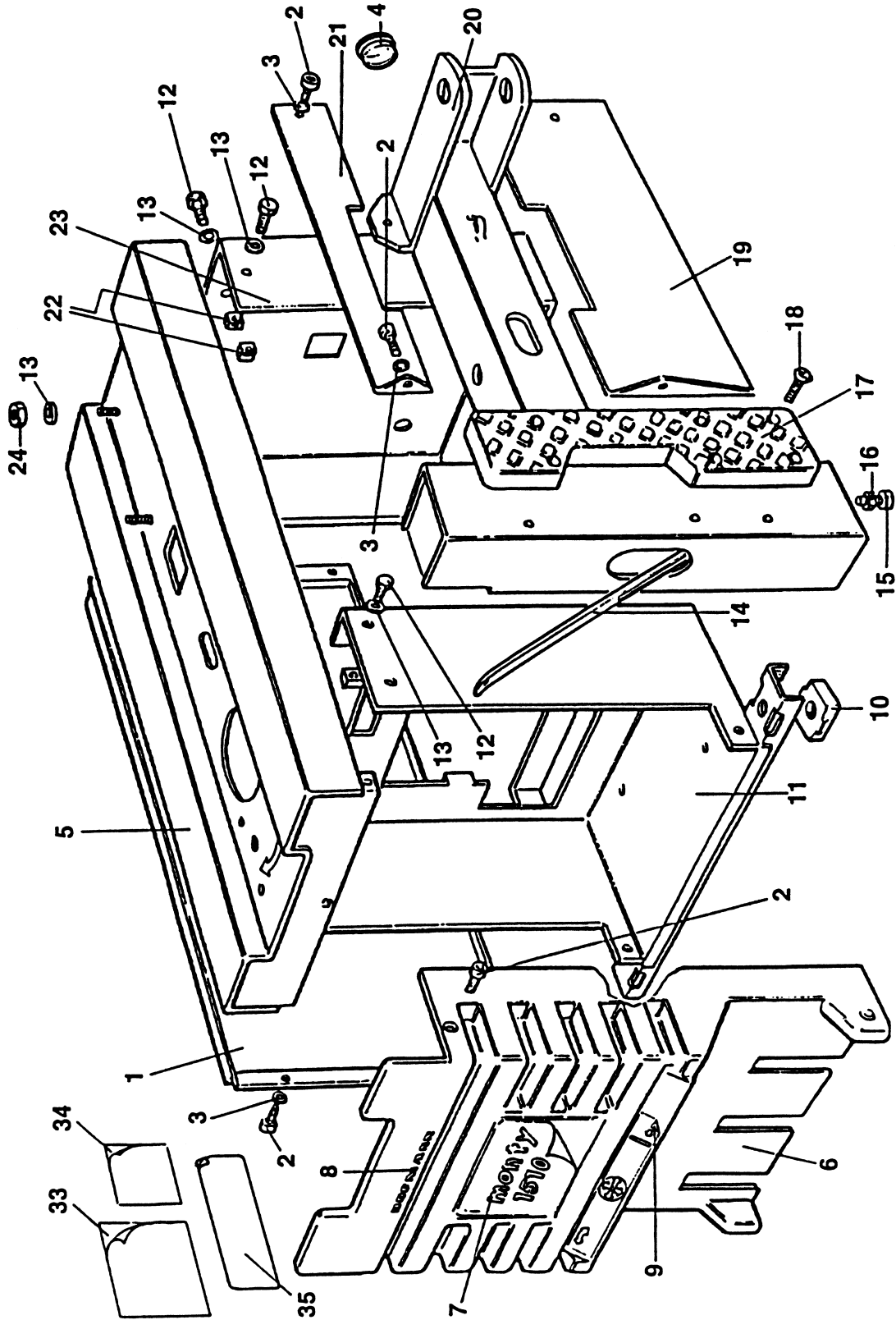


Figure 2 Oiler & Regulator

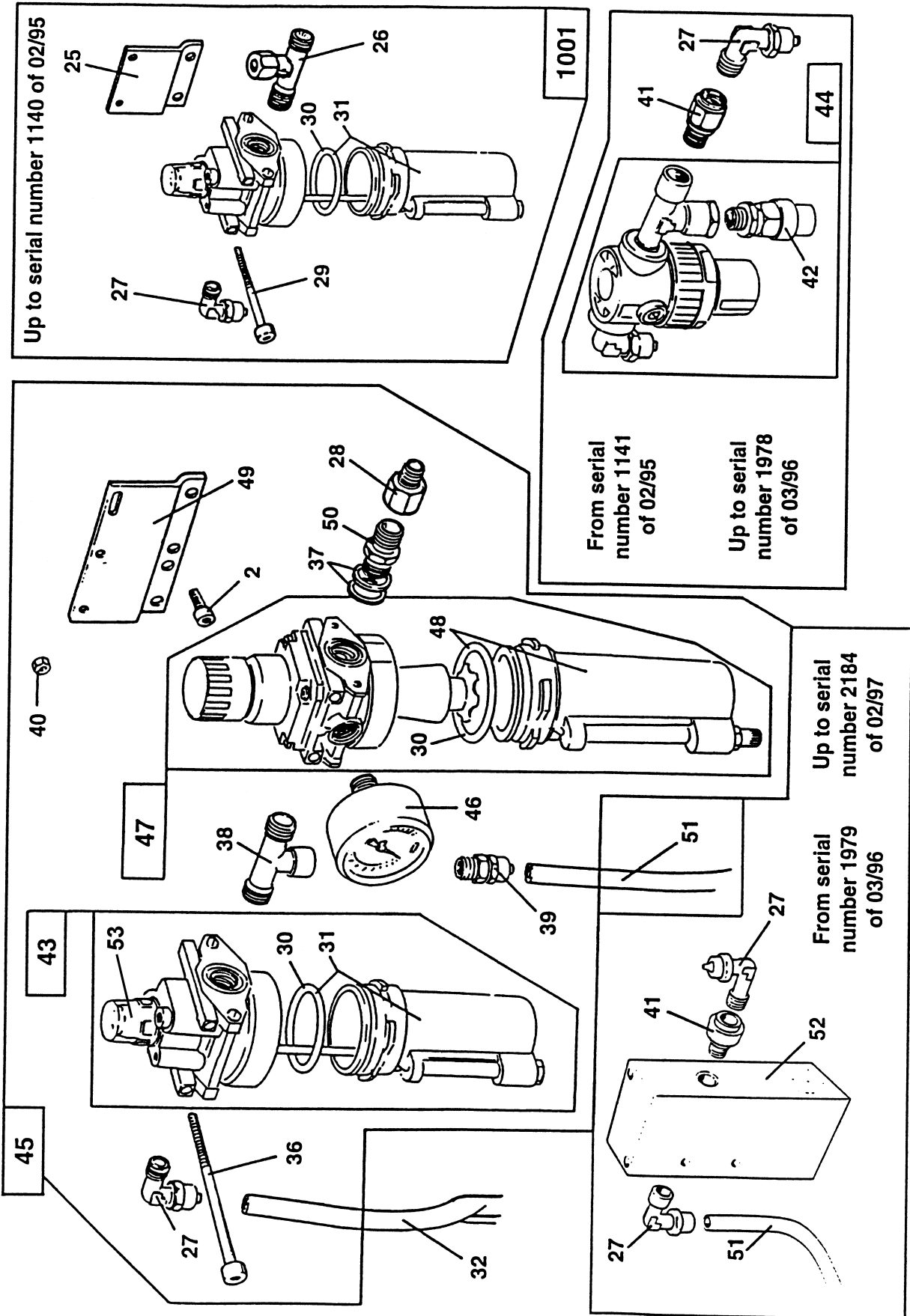


Figure 3 Turntable

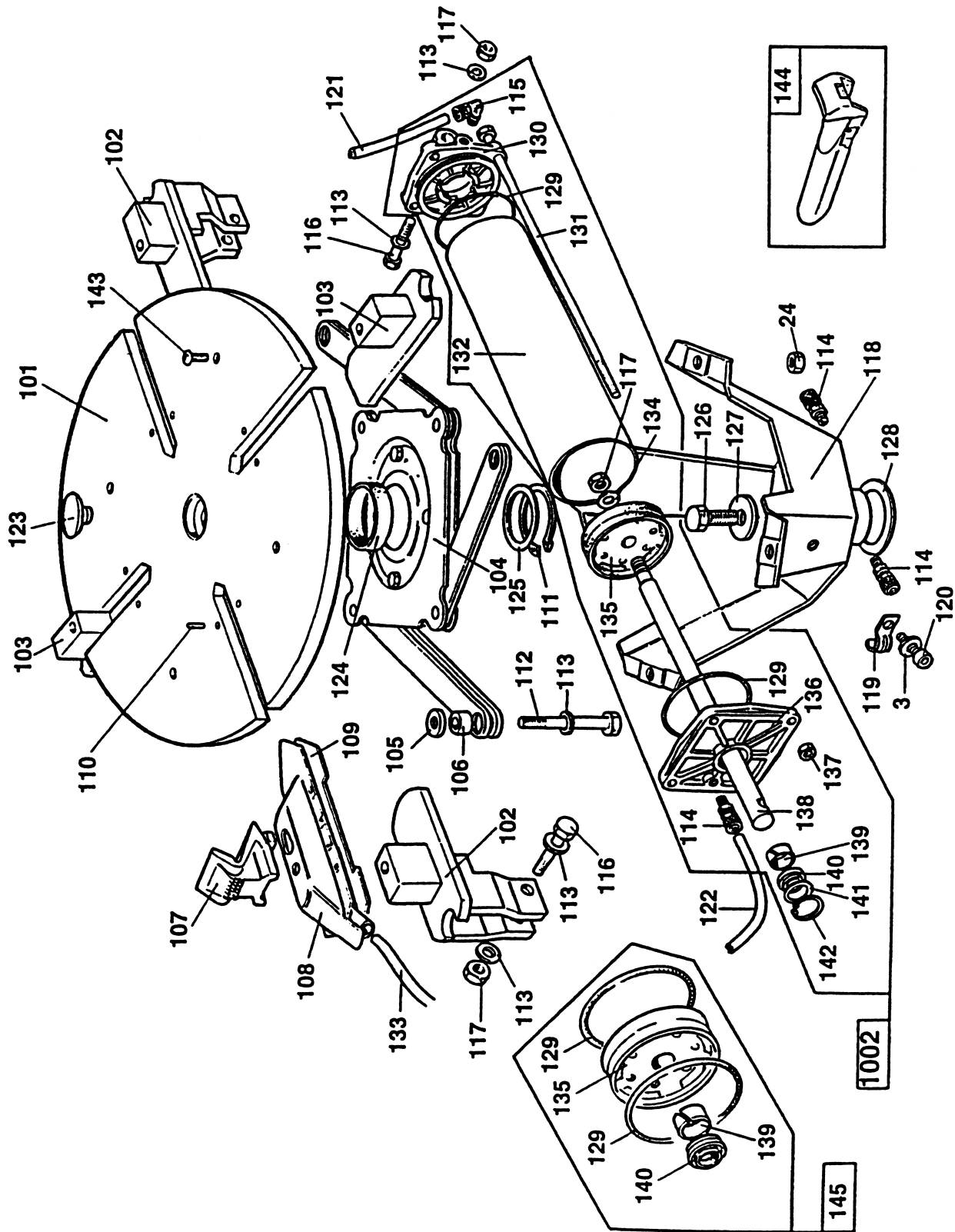


Figure 4 Bead Breaker

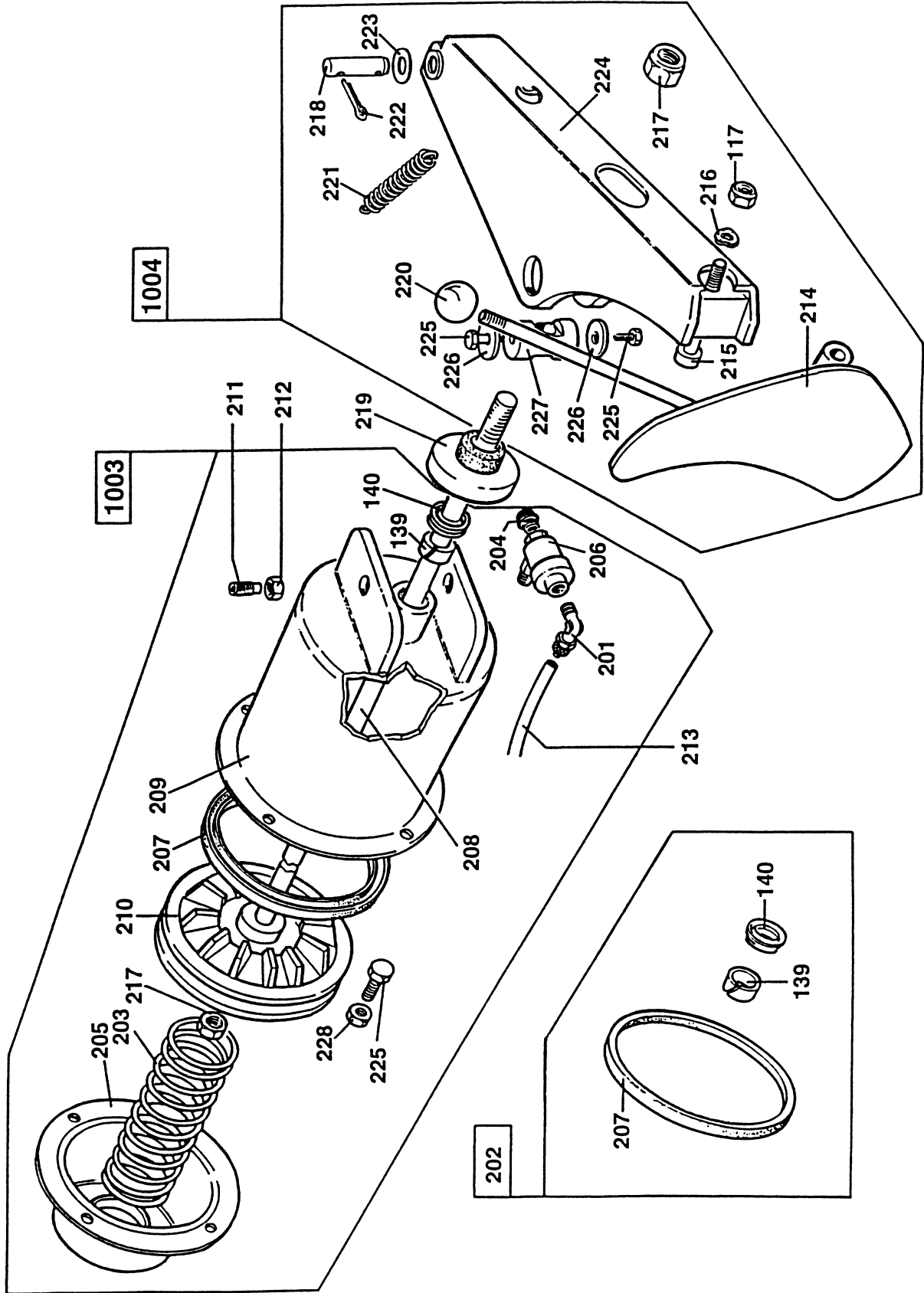


Figure 5 Tower

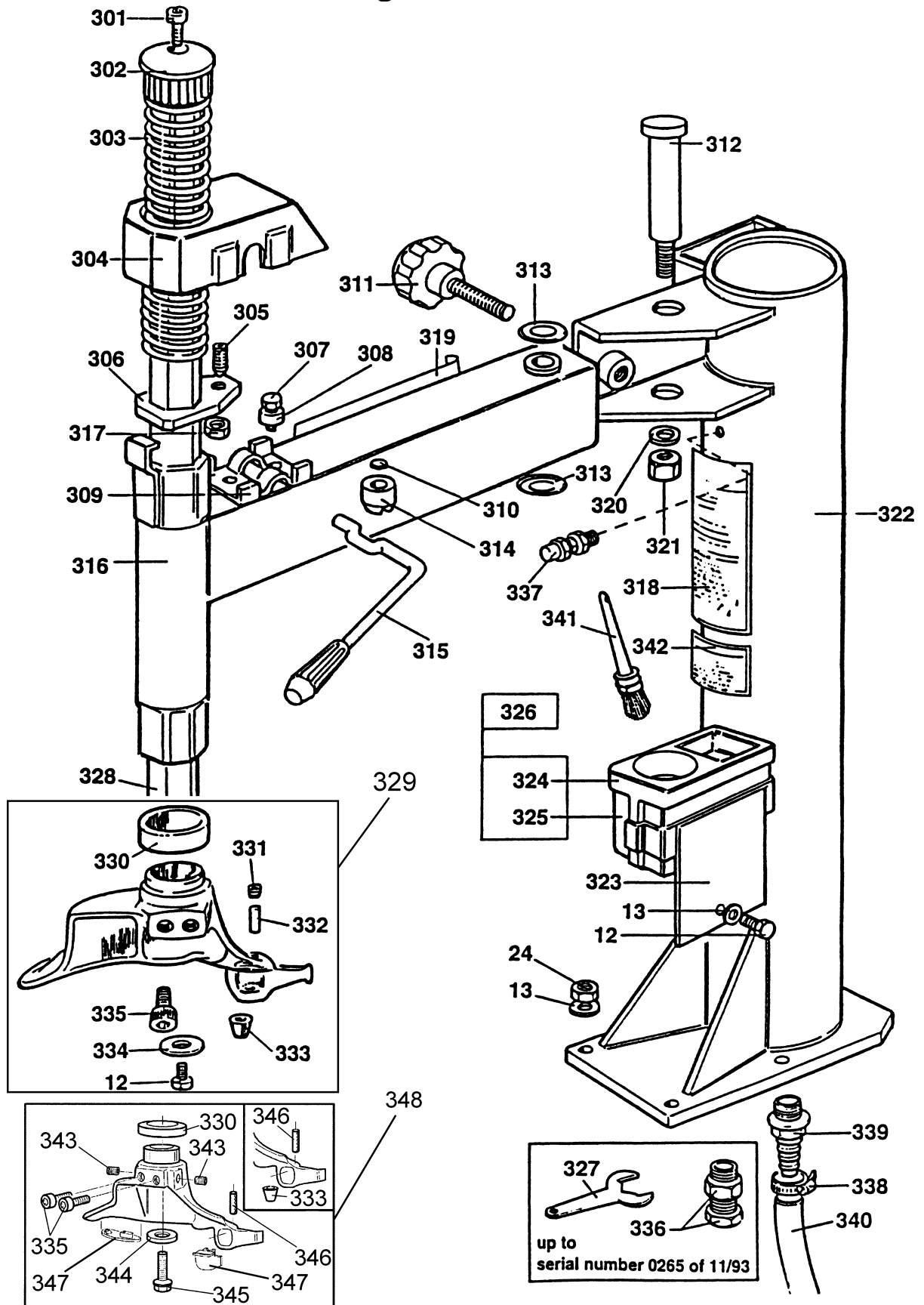


Figure 6 Transmission, Motor, Switch

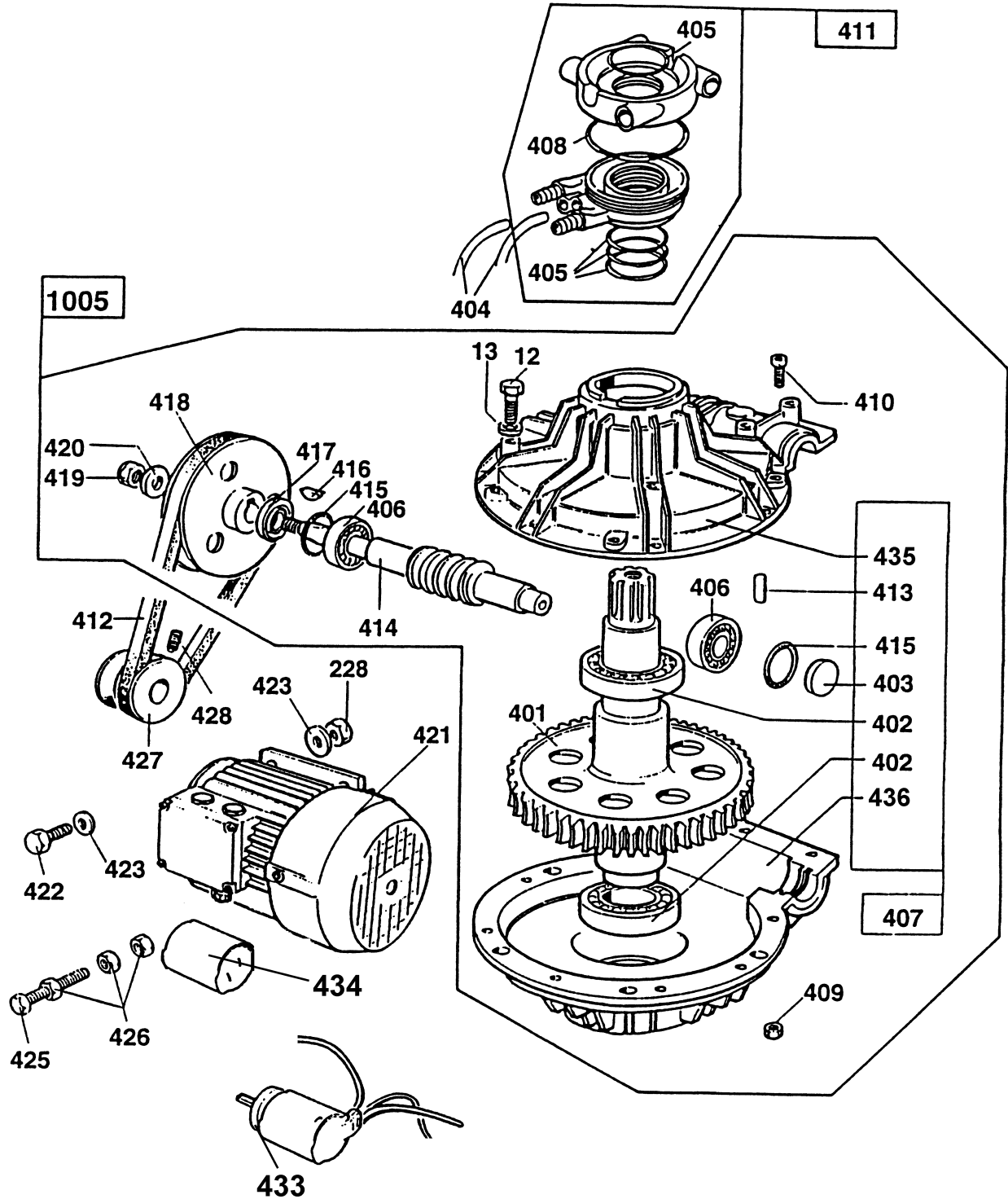


Figure 7 Pneumatic Plate

1006

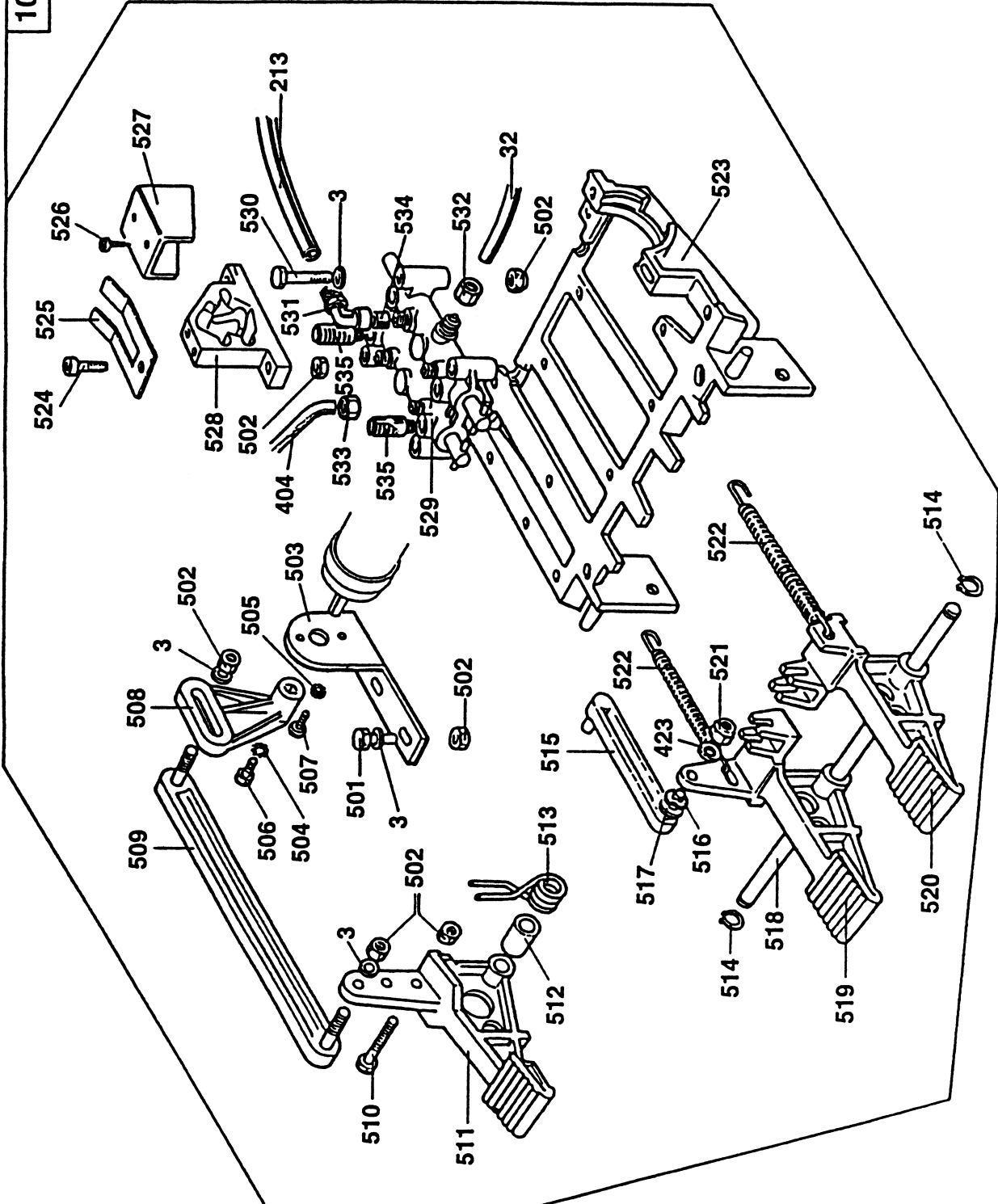
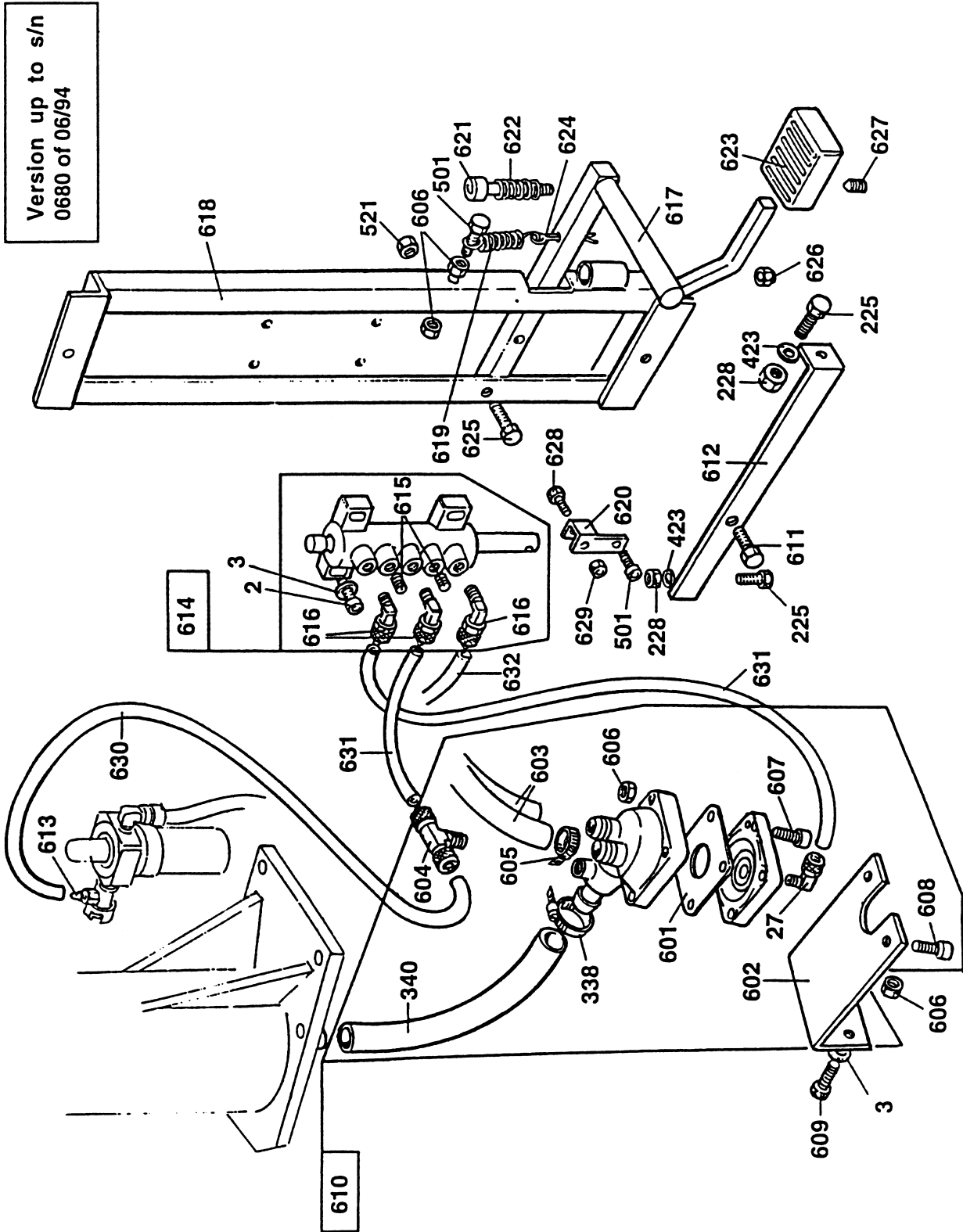
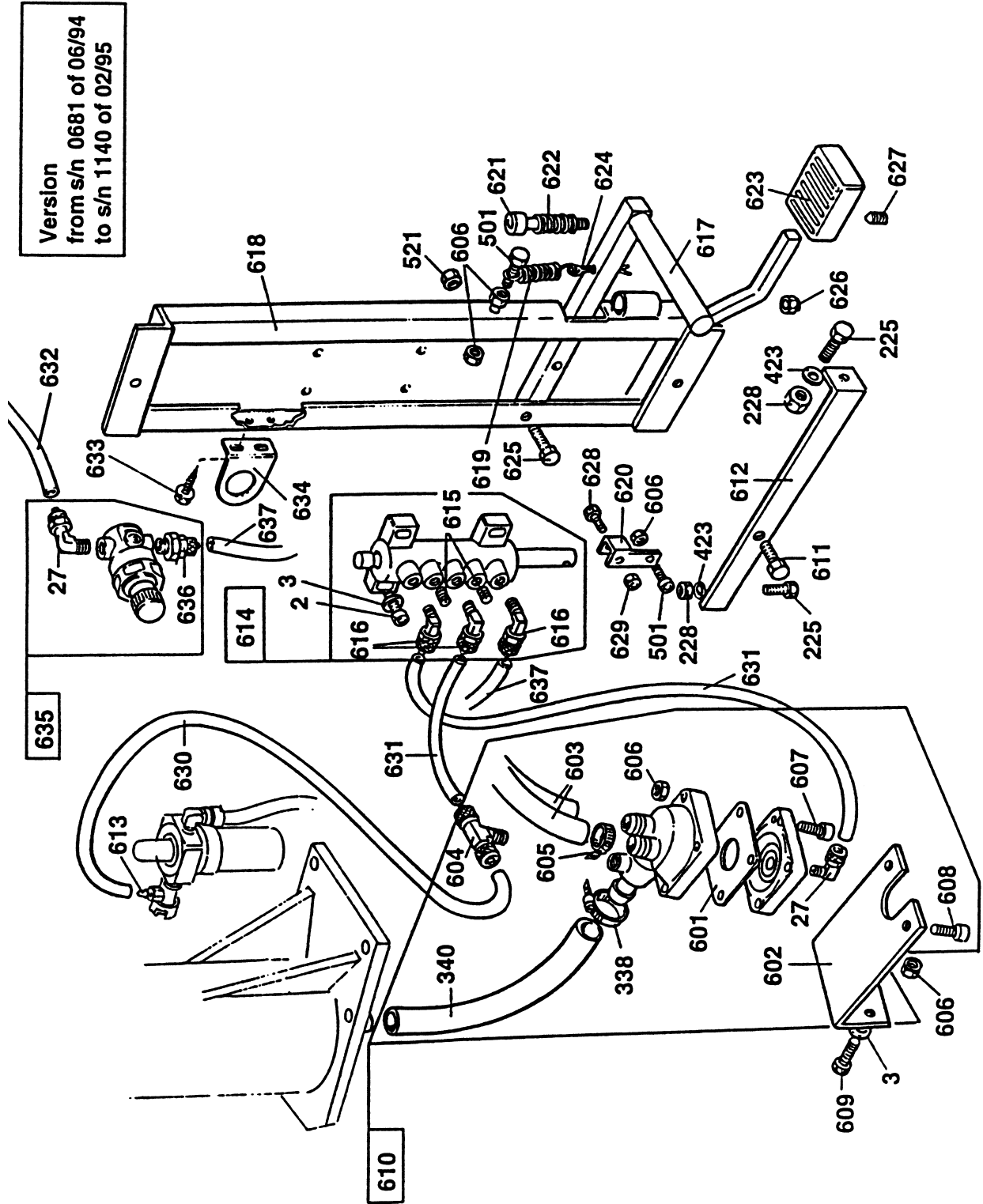


Figure 8A Inflating Pedal



Version up to s/n
0680 of 06/94

Figure 8B Inflating Pedal



Version from s/n 0681 of 06/94 to s/n 1140 of 02/95

Figure 8C Inflating Pedal

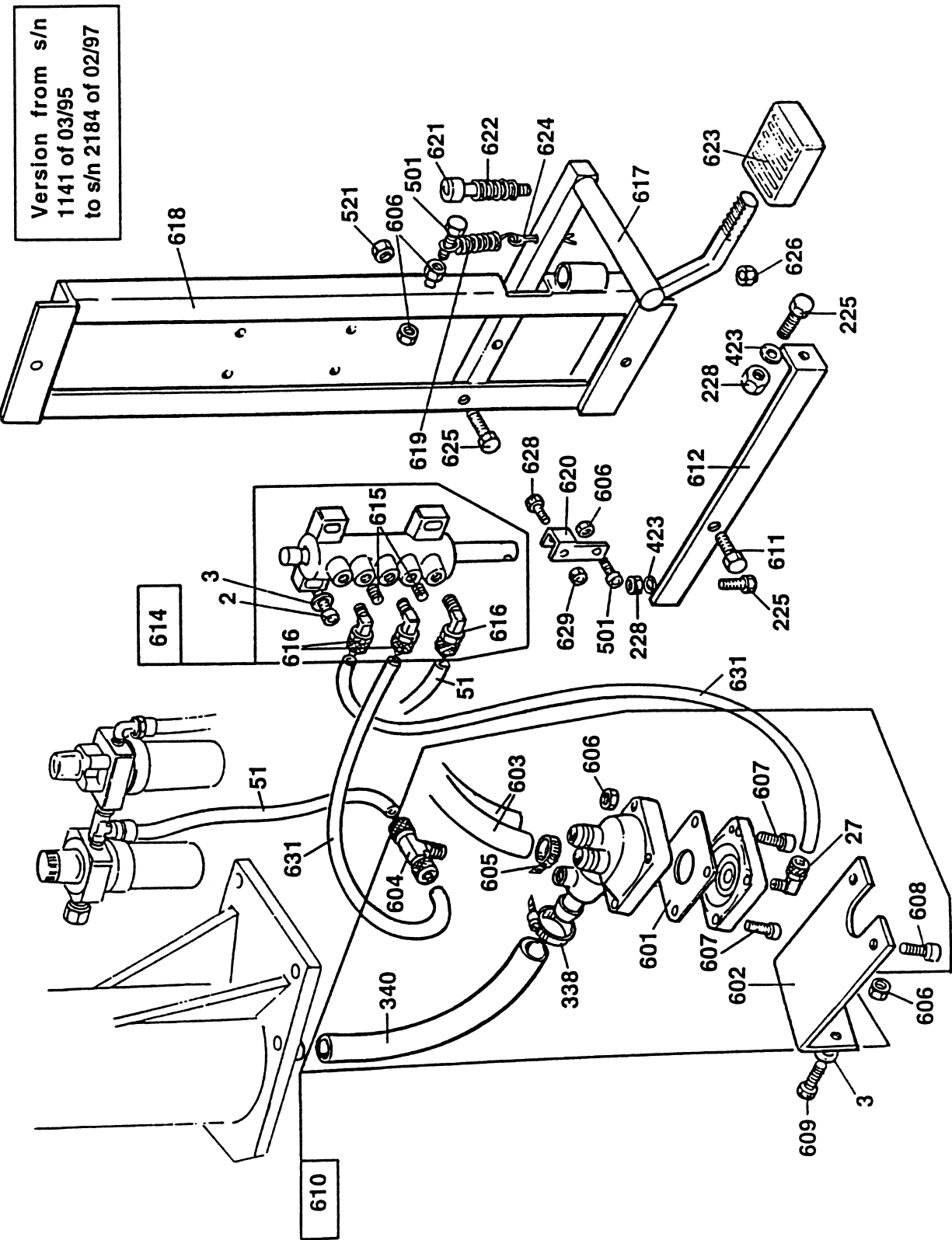


Figure 8D Inflating Pedal

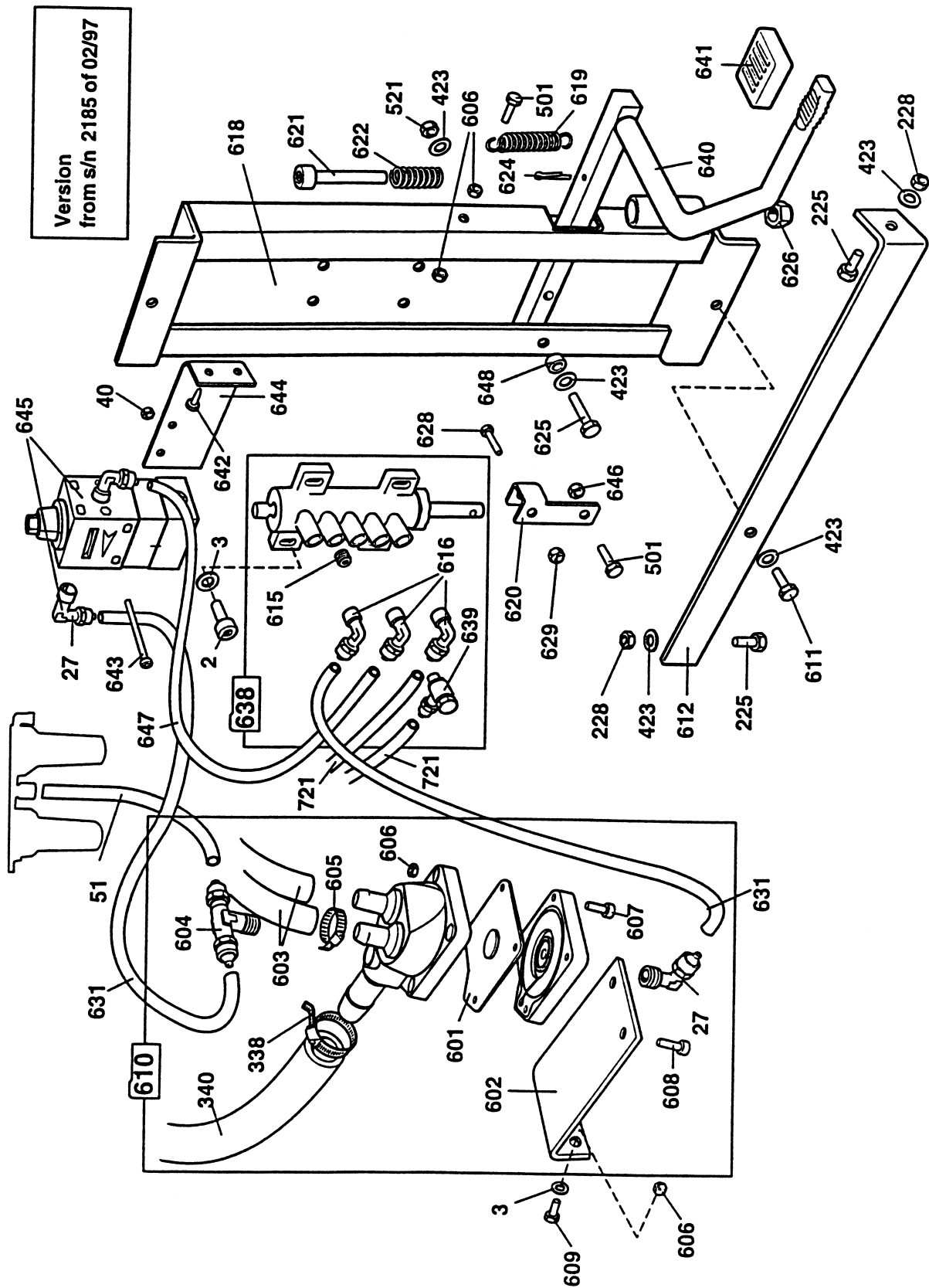
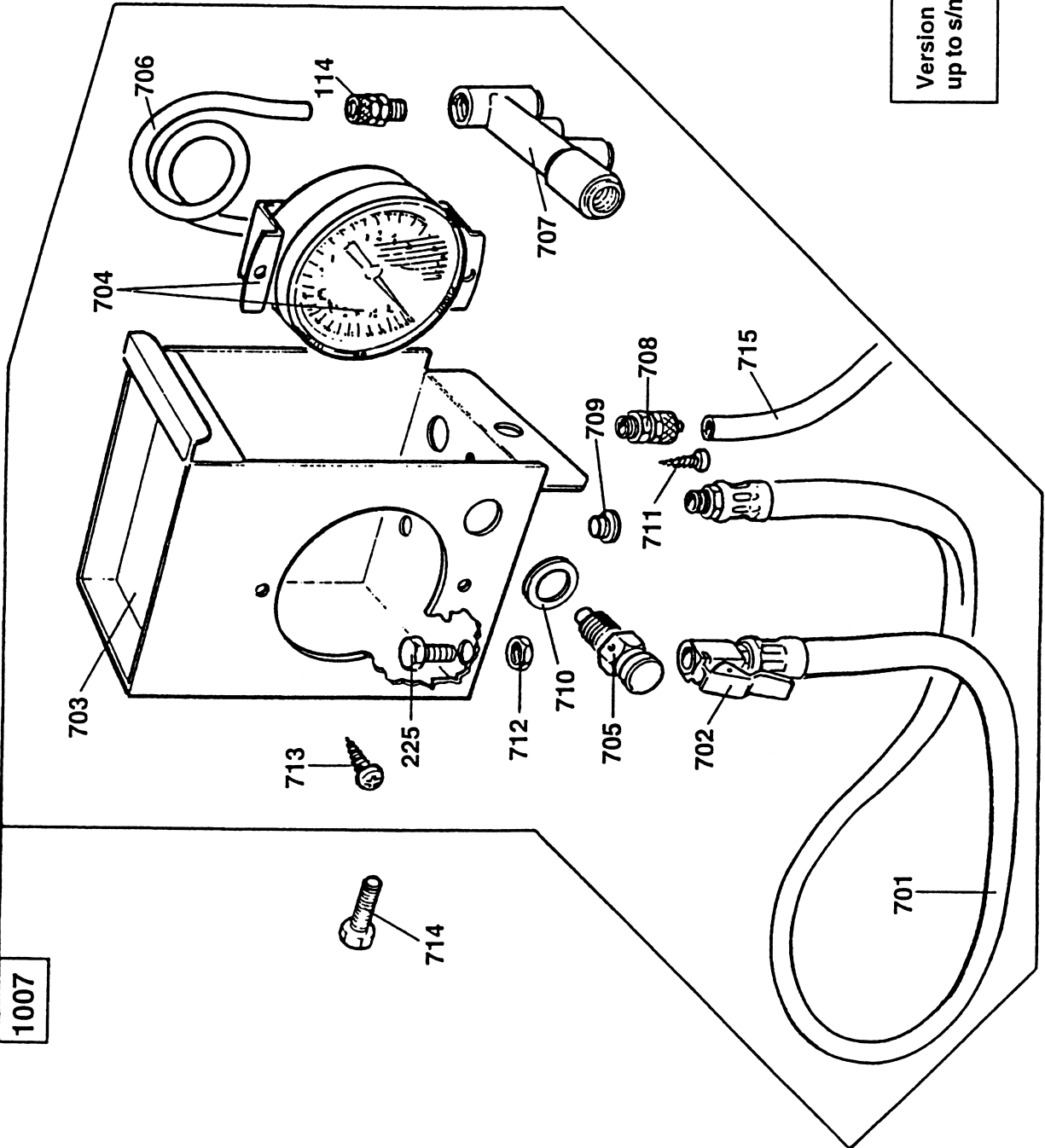


Figure 9A Gauge Box

Version
up to s/n 2184 of 02/97



1007

Figure 9B Gauge Box

Version
from s/n 2185 of 02/97

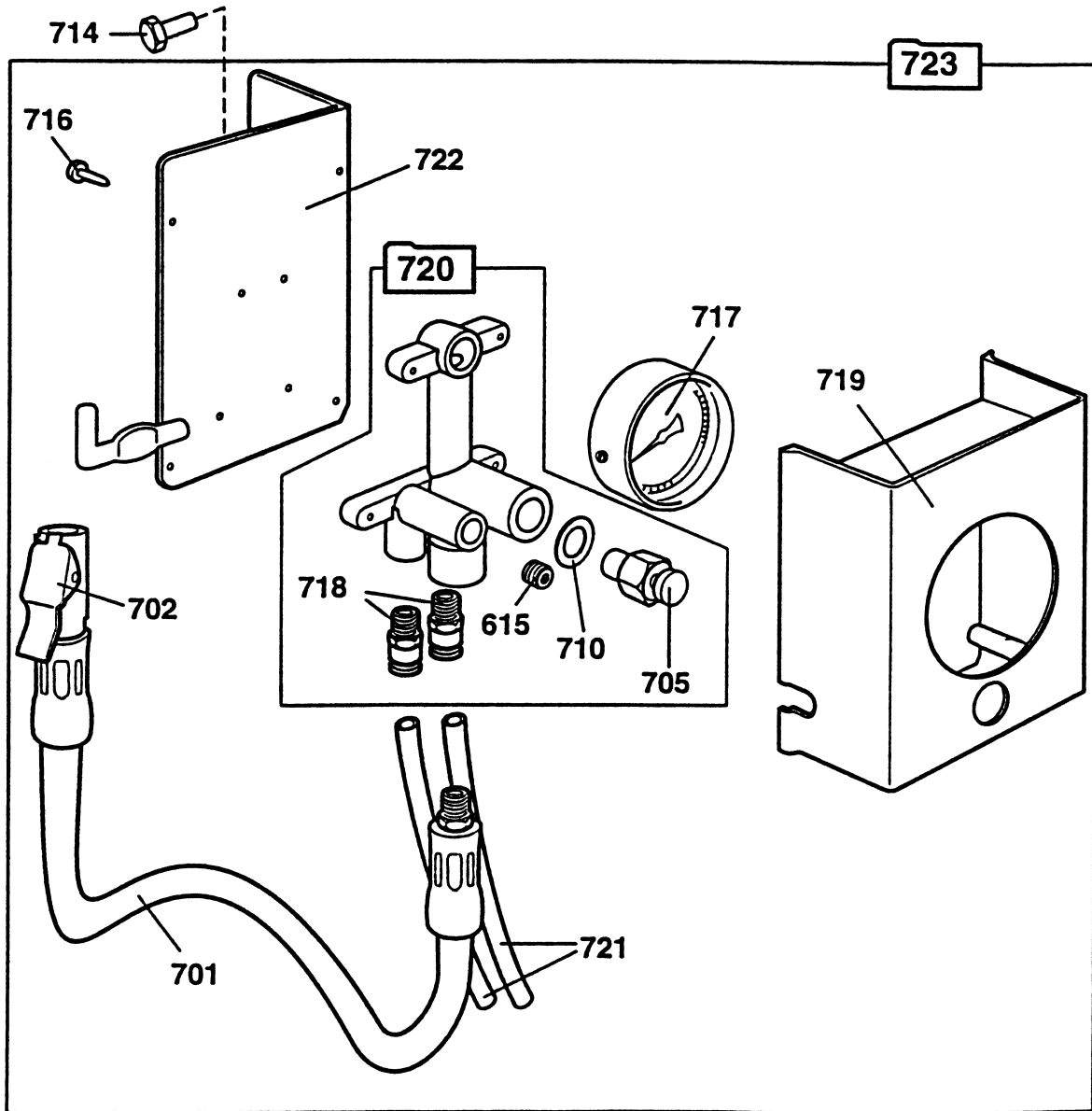
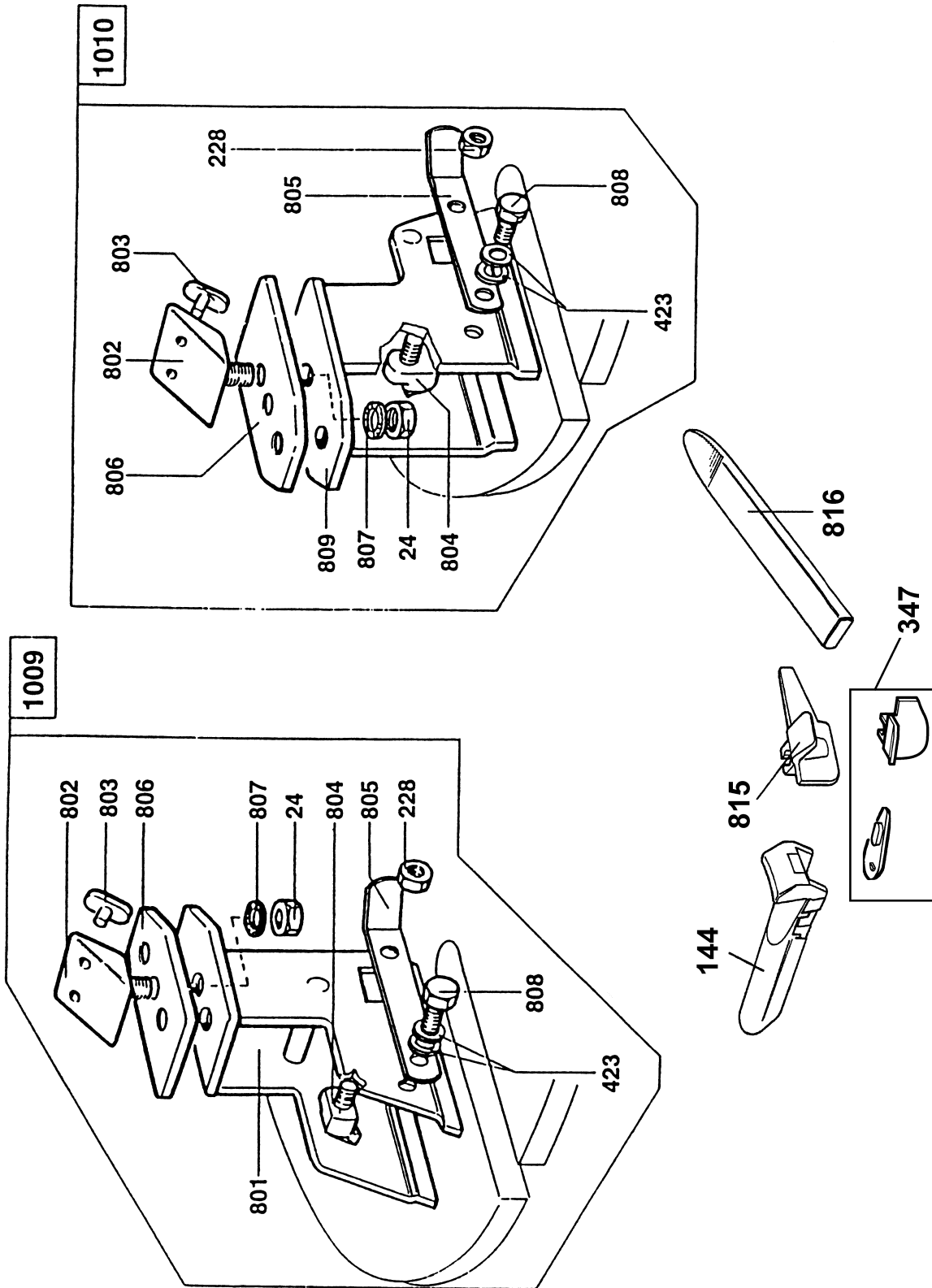


Figure 10 Accessories



No.	Part No.	Description
1	3011977	Left panel
2	4300066	Screw M.6 x 18
3	4300153	Washer D 6
4	4211972	Undercap D 42
5	2410929	Upper body
6A	3011281	Plastic front cover (up to s/n 0879-08/94)
6B	3013833	Plastic front cover (from s/n 0880-08/94)
7	3012485	Label Monty 1510
8	3010749	Label HOFMANN
9	3006250	Pedal sticker
10	3305148	Foot
11A	2411282	Bottom panel (up to s/n 0879-08/94)
11B	2200809	Bottom panel (from s/n 0880-08/94)
12	4300028	Screw M10 x 25
13	4300155	Washer D 10
14	EAA0247G02A	Tire lever (3009516)
15	4300030	Screw M10 x 35
16	4300128	Nut M10
17	3011283	Rubber pad
18	4300427	Screw M6 x 25
19	3011260	Lower right panel
20	2410928	Bead breaking support
21	3011980	High right panel
22	4300426	Nut M10
23A	3011258	Rear cover (up to s/n 0879 - 08/94)
23B	3013839	Rear cover (from s/n 0880 - 08/94)
24	4300134	Nut M10
25	3010925	Lubricator fixing bracket
26	4294639	Union
27	4205255	L union 1/4" 8-6
28	3012163	Adapter 14 x 1.5 female to 1/4" npt male
29	4300237	Screw M4 x 50
30	3011337	O-ring for reservoir
31	3011338	Oil tank with O-ring
32	3010923	Connecting hose
33	3014098	Label "ELECTRIC RISK"
34	3014076	Label "EXPLOSION HAZARD"
35	3014376	Label for inflating pedal
36	4300348	Screw M4 x 60
37	4206391	Washer 1/4"
38	4214580	T-union 1/4"
39	4208417	Union 1/8" 6/4

No.	Part No.	Description
40	4300130	Nut M4
41	4210351	Union 1/4" - 1/4"
42	4210865	Safety valve
43	3-00340	Lubricator (4210926)
44	2014053	Complete pressure regulator
45	2014418	Water sep. & reg. & oiler (2200886)
46	3-00488	Manometer (4210937)
47	3-00351	Water separator and pressure regulator (4210940)
48	3011339	Filter tank with O-ring
49	3010936	Fixing bracket
50	4214050	Union D8LR
51	3093866	Air inlet hose
52	3-00389	Quick inflating valve (4214780)
53	4214845	Oiler Dome with O-ring
101	2311841	Turntable
102	2410741	Slide with flange
103	2410732	Slide with guide
104	2310778	Control plate
105	3010736	Spacer for control plate
106	3010780	Flat spacer for chuck
107	3008225	Clamping jaw
108A	2200938	Slide with nozzle (each)
108B	2200937	Slide with nozzle (set of 4)
109	3010742	Protection plate
110	4300410	Split pine D 5 x 14
111	4300192	Seeger ring D 65
112	3010804	Special screw M12
113	4300156	Washer D 12
114	4205260	Union 1/8" 6-4
115	4293815	L union 1/8" 6-4
116	3093885	Anchor bolt for cylinder D 95
117	4300142	Nut M12
118	2410631	Chuck support
119	4210088	Hose clamp
120	4300064	Screw M6 x 8
121	3010816	Self centering cylinder hose
122	3010782	Self centering cylinder hose
123	3310772	Plug D 20
124	3310773	Spacer for control plate
125	3010781	Washer 65.2 x 85 x 0.5
126	4300052	Screw M16 x 1.5 x 35 10K
127	3010776	Washer for turntable
128	3011982	Washer D 57 x 42 x 2

No.	Part No.	Description
129	4210914	O-ring 88.5 x 3.53
130	3010916	Rear flange for cylinder D 95
131	3010913	Tie rod for cylinder D 95
132	3010917	Casing for cylinder D 95
133	3010068	Long hose
134	3010677	Washer 12.5 x 30 x 3
135	4210915	Piston for cylinder D 95
136	2200827	Front flange for cylinder D 95 with guide
137	4300372	Self-locking nut M8
138	3010918	Piston rod for cylinder D 95
139	42457	WRI 20 guide for piston rod (4206523)
140	4206114	Lipped gasket
141	3010912	Washer D 24 x 29.8 x 0.5
142	4300414	Seeger ring D 30
143	4300416	Screw M10 x 25
144	2202659	plastic protection for jaws (Set of 4) (2200334)
145	2200594	Set of gasket for cylinder
201	4211291	L union 1/8" 10-8
202	2200603	Set of gaskets for bead breaker cylinder The Lipped Gasket included in this kit has changed. The new gasket is black and not flexible, the original gasket was light gray and flexible. When rebuilding the cylinder order item #4206114 in addition to this kit.
203	3094378	Piston return spring
204	3-90065	Silencer 1/4" (4205815)
205	3094377	Bead breaker cylinder cover
206	3005320	Valve 1/4"
207	4205257	Lipped gasket D 186
208	3010963	Bead breaker rod
209	2411857	Bead breaker cylinder
210	3011059	Piston
211	3011290	Cylinder fixing screw
212	4300136	Nut M14
213	3011335	Hose 10-8 L=300 mm
214	2411299	Bead breaking shovel
215	3011298	Shovel pin
216	4300168	Washer
217	4300148	Nut M18 x 1.5
218	3011341	Pin for bead breaking arm
219	8424096	Buffer
220	3305242	Bead breaker handle knob
221	3011294	Spring 23 x 67 x 3
222	4300181	Cotter pin 3 x 25
223	4300158	Washer D 16

No.	Part No.	Description
224	2411570	Bead breaker arm
225	4300019	Screw M8 x 16
226	3011296	Washer 8.25 x 40 x 3
227	3011297	Swinging pin
228	4300133	Nut M8
301	4300073	Screw M8 x 30
302	3305161	Knob
303	3005564	Vertical arm spring
304	3310506	Cover for locking system
305	4300399	Screw M12 x 30
306	3010501	Locking plate for hexagonal arm
307	4300020	Screw M8 x 20
308	3010908	Spacer
309	3010505	Plate for cam lever
310	3010504	Plate for pawl
311	3005353	Handle with screw
312	3010758	Arm pin
313	3010759	Special washer
314	3310503	Locking pawl
315	2310947	Lever with handle
316	2412480	Swinging arm
317	4300409	Flat nut M12
318	3014077	Label "EXPLOSION HAZARD" complete
319	3010774	Label "DANGER" for arm
320	3010760	Washer D 40 x 16.5 x 5
321	4300143	Nut M16
322	2412471	Vertical post
323	2112478	Support
324	3305805	Cover for tire paste container
325	3305806	Tire paste container
326	2200091	Tire paste container with cover
327	2110635	Key
328	3012483	Hexagonal arm
329	2200191	Obsolete replaced by #2202 073
330	3309545	Mounting head shock absorber
331	4300280	Screw M6 x 6
332	4210027	Pine D 5x22
333	3093674	Claw roller
334	3007143	Washer 10.25 x 36 x 4
335	4300076	Screw M10 x 20
336	4210454	3-pieces union 1"
337	4210566	Safety valve
338	4211676	Hose clamp

No.	Part No.	Description
339	4212108	Hose connection 1" D 25
340	3013087	Hose D 37-25 L=330 mm
341	81556	Tire lube brush (4294838)
342	3014031	Label "READ INSTRUCTIONS"
343	2-01146	Set screw M10 x 10
344	9350194	Washer
345	9350197	Bolt
346	4220605	Split Pin \varnothing 5 x 25
347	2201645	Set of inserts 10 ea. For #2202073 head
348	2202073	Complete mount/demount head
401	2411302	Gear wheel
402	4100008	Bearing 6010-Z
403	4210479	Cap
404	3011303	Hose 6-4 L=610 mm
405	4207833	O-ring 65 x 60 x 2.62
406	4100005	Roller bearing 30204
407	2200485	Lower and upper gear box
408	4212497	O-ring 101.27 x 2.62
409	4300428	Self locking nut M6
410	4300272	Screw M6 x 20
411	2012496	Complete rotating union
412	4211304	V-belt A 25
413	4210480	Pin 8 x 20
414	3006014	Worm screw
415	4206091	O-ring 35 x 2.2
416	4300194	Woodruff key 6 x 9
417	4206095	O-ring
418	3005201	Gear box pulley
419	4300266	Low nut M14
420	4300157	Washer D 14
421	3-00932	1-phase motor 110V. 60Hz. (4215947)
422	4300022	Screw M8 x 30
423	4300154	Washer D 8
425	4300429	Screw M8 x 50
426	4300220	Nut M8
427	3011307	Motor pulley
428	4300375	Screw M6 x 5
433	5-400682	Reversing switch (4213369)
434	4481432	Motor Run Cap. (45 MFD.)
435	3006087	Upper gear box
436	3006086	Lower gear box
501	4300013	Screw M6 x 20
502	4300139	Nut M6

No.	Part No.	Description
503	3011308	Pedal holder
504	4300169	Tooth washer D 4
505	4300239	Tooth washer D 3
506	4300005	Screw M4 x 12
507	4300085	Screw M3 x 10
508	8404283	Switch lever
509	8429009	Switch rod
510	4300240	Screw M6 x 40
511	3011320	Pedal for chuck rotation
512	3011321	Spacer
513	3011322	Leg spring
514	4300186	Seeger ring D 12
515	2406150	Cam connecting rod
516	4300167	Washer D 8
517	3011323	Washer 8 x 16.5 x 0.5
518	3011324	Pedal shaft
519	3011325	Clamping pedal
520	3011326	Bead breaker pedal
521	4300140	Nut M8
522	3011327	Spring 14 x 94 x 2
523	3011328	Pedals support
524	4300241	Screw M8 x 25
525	3006149	Fork leaf spring
526	4300291	Screw 2.9 x 9.5
527	3011329	Trip cam cover
528	3306148	Trip cam
529	2311330	Complete valve
530	4300246	Screw M6 x 50
531	3011331	L union
532	3011332	Hose ring D 8
533	3011333	Hose ring D 6
534	3011336	Hose 10-8 L=12 mm
535	4293991	Silencer 1/8"
601	2411999	Diaphragm
602	3011458	Valve plate
603	3012503	Hose D 27-17 L=590 mm
604	4212501	T quick union 1/4" 8-6 8-6
605	4212504	Hose damp D 14-27
606	4300132	Nut M6
607	4300067	Screw M6 x 30
608	4300356	Screw M6 x 40
609	4300011	Screw M6 x 14
610	2012499	Complete inflating valve

No.	Part No.	Description
611	4300018	Screw M8 x 12
612	3011981	Fixing bar
613	4294658	Reinforcement for hose
614	2310056	Complete valve
615	4209654	Cap 1/8"
616	4205252	L union 1/8" 8-6
617	2409994	Pedal support
618	2411979	Support
619	3005887	Pedal control spring
620	3009407	Connecting rod
621	3010481	Special screw M10
622	3094774	Spring
623	3310066	Rubber pedal
624	4300183	Split pin 4 x 35
625	4300023	Screw M8 x 35
626	4300141	Nut M10
627	4300364	Screw M6 x 8
628	4300002	Screw M4 x 25
629	4300138	Nut M4
630	3093966	Clamp opening hose
631	3095174	Air inlet short hose
632	3010164	Air inlet hose
633	4300485	Screw 4.8 x 16
634	4213744	Fixing plate
635	2013748	Pressure regulator with unions
636	4208417	Union 1/4" 8/6
637	3094649	Air outlet short hose
638	2315556	Complete valve
639	2200073	Union 1/8" 8-6
640	2414068	Pedal support
641	3314067	Rubber pedal
642	4300230	Screw 3.9 x 9.5
643	4300572	Screw M4 x 45
644	3015535	Support
645	2201141	Quick inflating valve with unions
646	4300122	Low nut M6
647	3009182	Pneumatic hose 8-8 L=240 mm
648	3014310	Bush
701	4-400208A	Air outlet hose (2408318)
702	4205451	Inflating valve
703	2412527	Inflating unit box
704	2200707	Manometer with support and union
705	3012530	Push-button

No.	Part No.	Description
706	3094834	Cylinder front hose
707	3312525	Partition
708	4205322	Union 1/8" 8-6
709	4206104	Undercap D 11.5
710	4212776	Washer 1/4"
711	4300117	Screw 3.58 x 9.25
712	4300123	Nut M8
713	4300253	Screw 4.8 x 9.5
714	4300026	Screw M10 x 16
715	3005848	Pneumatic hose
716	4300115	Screw 3.5 x 13
717	3-00490	CE Pressure gauge (4214054)
718	4209029	Quick union 1/8" 8-6
719	3315382	Plastic box
720	2201142	Partition with unions
721	3015551	Pneumatic hose 8-6 L=1600 mm
722	2115384	ULGS support
723	2015386	Complete inflating unit
801	2409055	Wheel adaptor 8"- 9" (shell only)
802	3005696	Clamp
803	413163	Clamp protector (3305341)
804	3009133	Pawl
805	3009134	Leaf spring for pawl
806A	3311344	Alloy rim protection 3 3/8" long (each)
806B	2200612	Alloy rim protection 3 3/8" long (Set of 4)
806C	3317679	Alloy rim protection 3 3/4" long (each)
807	4300172	Tooth washer D 10
808	4300328	Screw M8 x 10
809	2409052	Motorcycle wheel adaptor (shell only)
815	3310678	Plastic insert for #2200191 head
816	3312230	Tire lever plastic protection
1001	2010924	Lubricator (2011732)
1002	2310779	Complete cylinder D 95
1003	2200655	Complete bead breaker cylinder
1004	2011301	Complete bead breaker arm with blade
1005	2200545	Complete gearbox
1006	2311334	Pedals complete
1007	2014162	Complete unit for inflating device
1009	2200038	ATV 8" - 9" complete (Set of 4)
1010	2201113	M/C adaptor complete (Set of 4)



HOFMANN USA

309 Exchange Ave. Conway, AR 72032 Phone 800-251-4500 Fax 501-450-2085

www.hofmann-usa.com

HOFMANN BALANCING TECHNIQUES LTD. CANADA

6500 Millcreek Dr. Mississauga, Ontario L5N 4G4 Phone 800-267-2185 Fax 905-821-2073

www.hofmann.ca

Edition 07/97 Revised 05/15